

# Removing CTRL+ALT+DEL Requirement

Technical Walkthrough 0.1

## Purpose

This document provides a walkthrough for administrators who wish to disable the CTRL+ALT+DEL policy.

## Reference

Disable CTRL+ALT+DEL requirement for logon: <https://msdn.microsoft.com/en-us/library/ms814164.aspx>

## Procedure

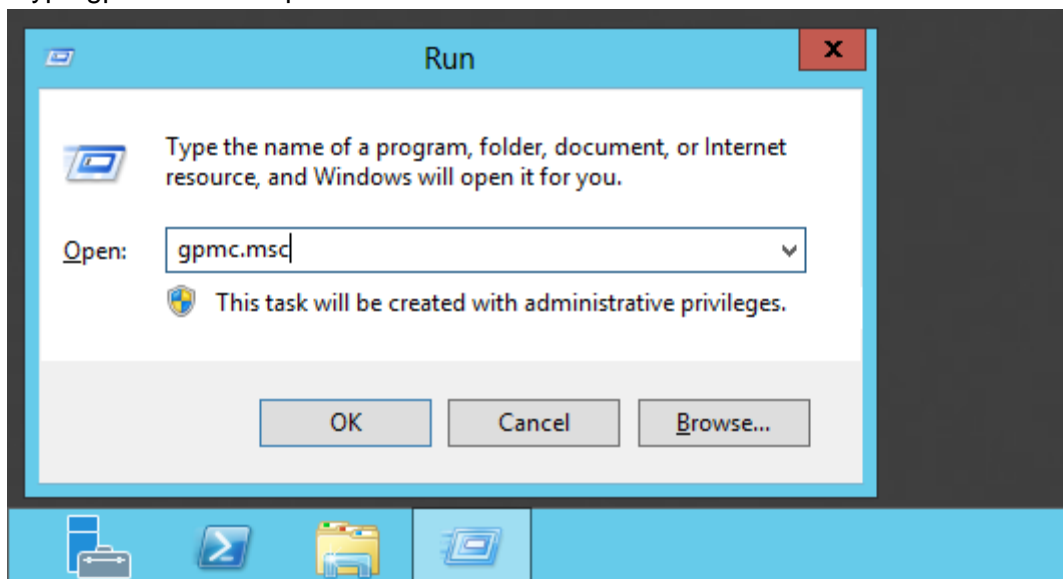
### Access domain controller

First you will need to get access to your domain controller. The domain controller is responsible for deploying group policies.

### Run the group policy management console gpmc.msc

Once connected to your domain controller, open the group policy management console. This can be done by following the steps below.

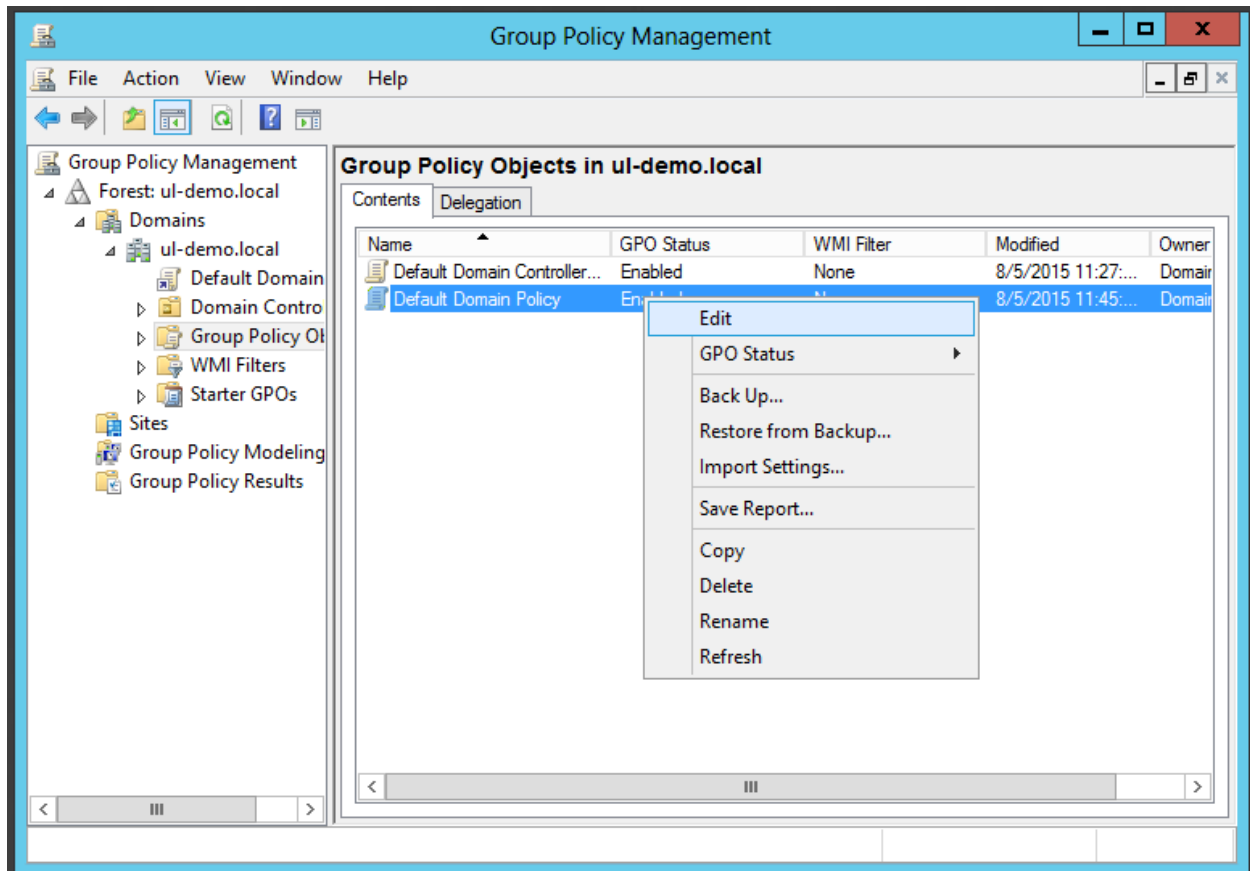
1. Open the "Run" prompt by holding the windows key and pressing "R"
2. Type gpmc.msc and press enter



If the group policy management console is not available to you, you must install the "Active Directory Domain Services" role in the "Add roles and features" wizard. This includes "Group Policy Management" as a default feature

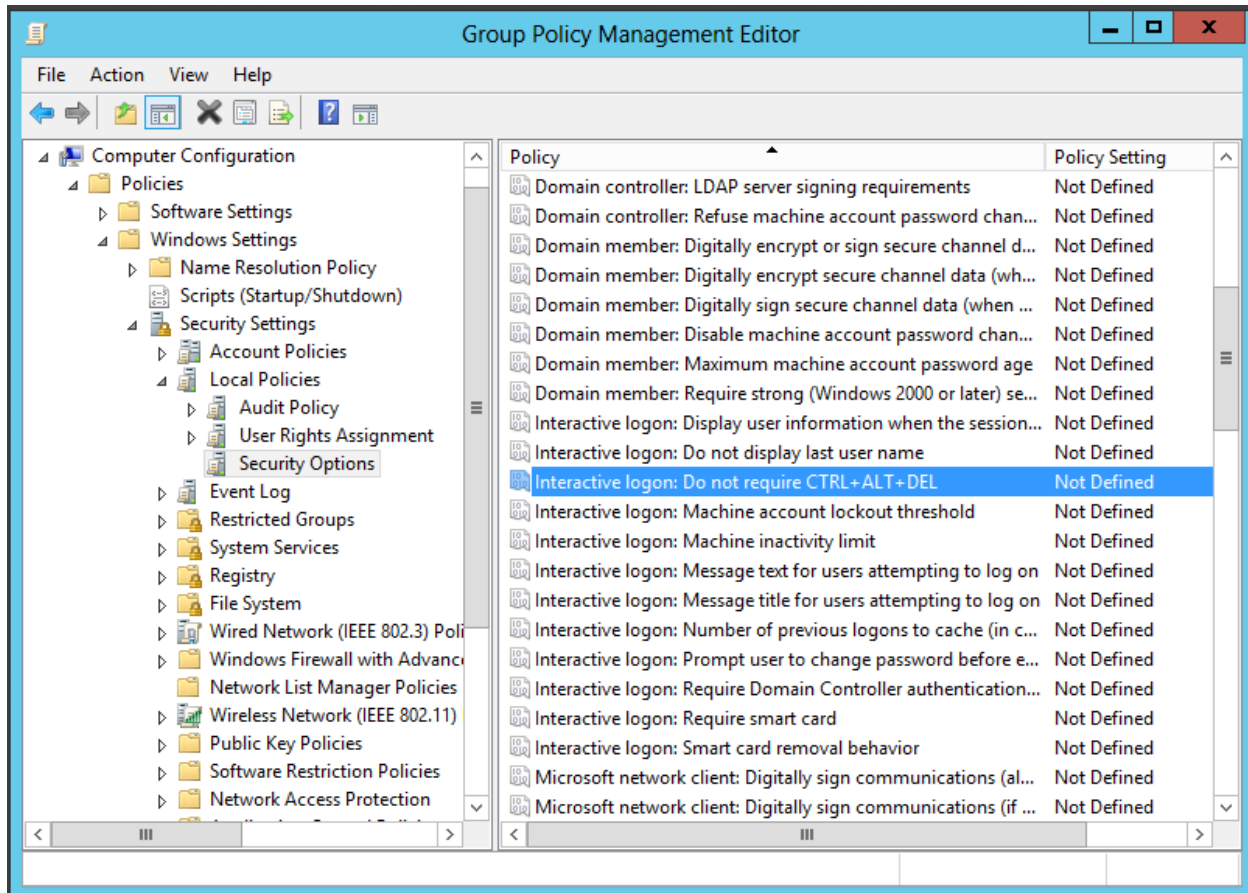
## Create and edit a custom Group Policy Object (GPO)

If you do not wish to create a custom group policy object, you may skip to step 5 and edit the “Default Domain Policy” instead.



*editing the default domain policy*

1. In the group policy management editor, select the domain you wish to manage and right click the “Group policy objects” item.
2. Select “New” to create a new GPO and leave Source Starter GPO at “(none)”.
3. You may name this GPO “Gatekeeper CTRL+ALT+DELETE” and select “OK”
4. Right click the new GPO that you just created and select “Edit”
5. In the left hand pane, navigate to “Computer Configuration\Windows Settings\Security Settings\Local Policies\Security Options”



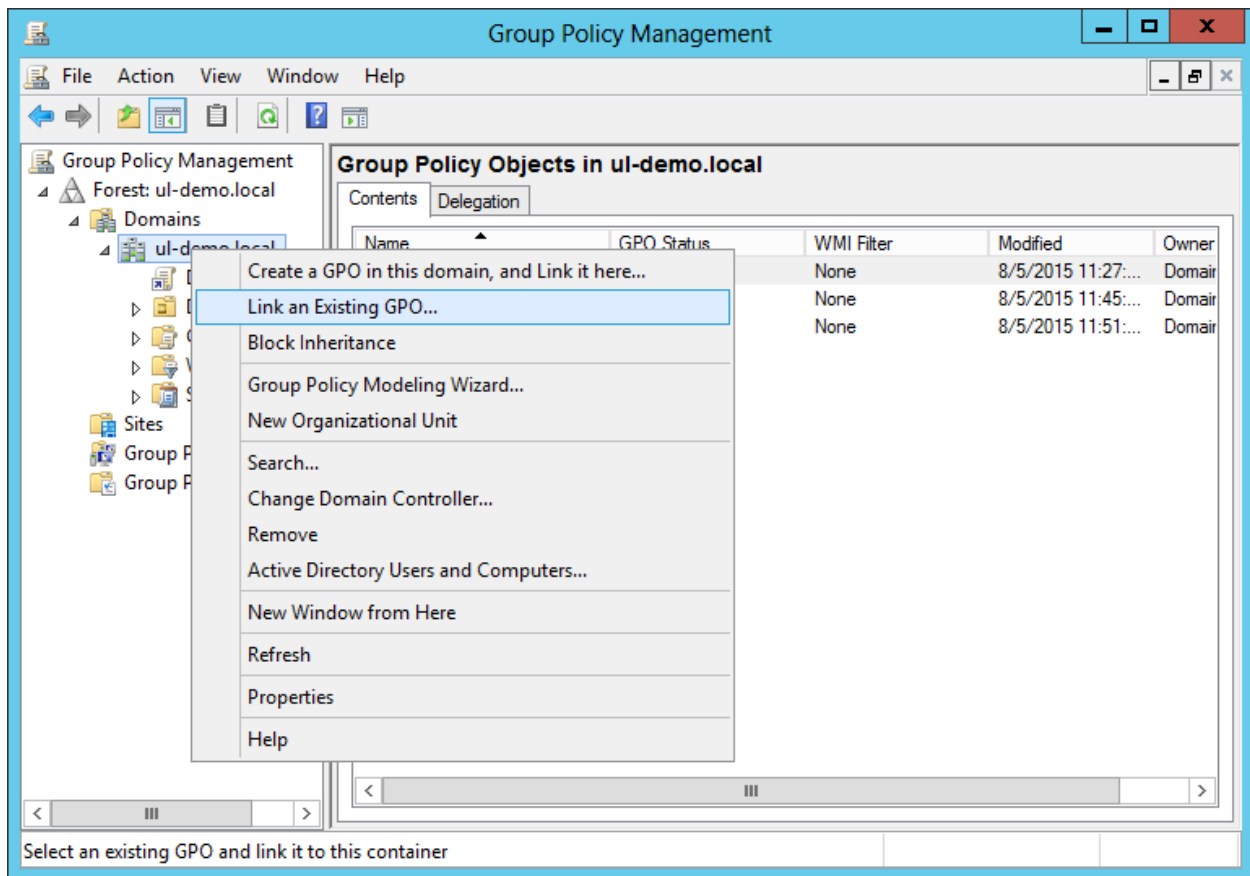
*selecting the CTRL+ALT+DELETE policy*

6. There is an interactive logon item called “Interactive logon: Do not require CTRL+ALT+DEL”
7. Define this item to be **enabled and enforced**
8. You may now close the group policy management editor window

The GPO has been created and should be enabled, but it is not applied to any computers yet. You must apply the GPO to the computers you wish to disable CTRL+ALT+DELETE on.

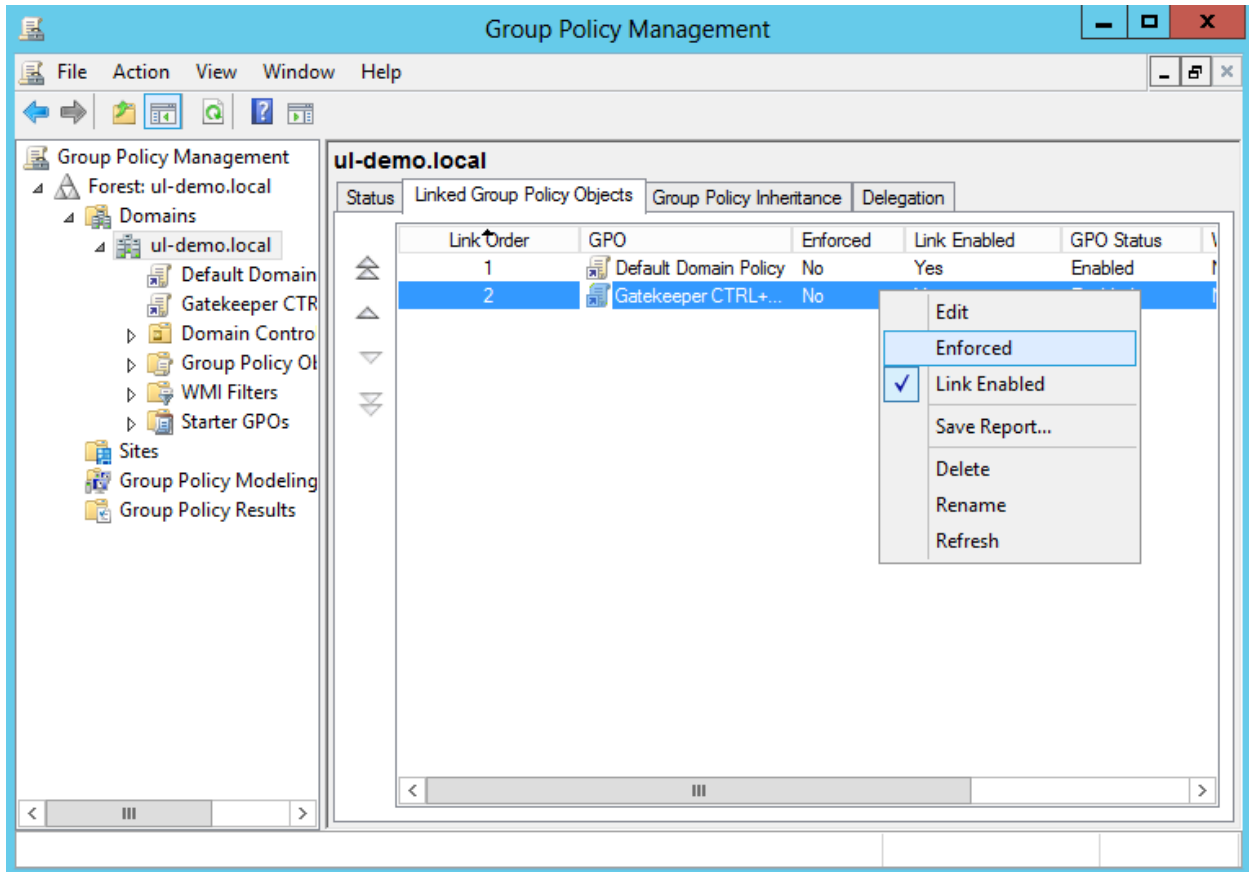
### Applying your custom Group Policy Object (GPO)

1. Right click the organizational unit which contains computers you wish to apply this GPO to
2. Select “Link an existing GPO”



*linking created group policy object*

3. Select your "Gatekeeper CTRL+ALT+DELETE" policy and select OK
4. Now right click the link you just created in the right hand pane and select "Enforced"



*enforcing a linked group policy*

- Unless overridden by other group policy objects, your Gatekeeper CTRL+ALT+DELETE policy will disable that requirement from the computers you selected to apply the policy to.

These settings will take effect when the client computers are restarted.

### Document History

Version	Date	Author	Description
0.1	8-3-2015	sag@ulabs.io	Initial